

## SolarGrid Energy Solutions

# Connect battery pack



LIQUID/AIR COOLING

PROTECTION IP54/IP55

PCS EMS

BATTERY /6000 CYCLES



## Overview

---

Can I connect a battery pack to one battery pack?

You CAN connect your load to ONE of the batteries, which will drain both equally. However, the preferred method for keeping the batteries equalized is connecting to the positive at one end of the battery pack and the negative at the other end.

How do you insulate a battery pack?

Attach Nickel Strips: Weld nickel or aluminum strips to connect the cells securely. Integrate the BMS: Weld the BMS to the battery pack, ensuring all connections are precise and insulated. 4. Insulate and Secure the Pack Wrap the Pack: Use insulating materials like fish paper or heat shrink tubing to protect the cells and connections.

How do you connect a BMS to a battery pack?

Connecting the BMS: B- Terminal: Connect to the main negative (-) terminal of the battery pack. B+ Terminal: Often already connected internally; check your BMS specifications. B1 (or B0): Connect to the most negative point (first cell's negative terminal). B2, B3, . . : Connect sequentially to the positive terminals of each cell in series.

How do you Weld a battery pack?

Connect the Cells: Use a high-voltage laser welding machine (2KW or 6KW) to weld cells in series or parallel configurations. Attach Nickel Strips: Weld nickel or aluminum strips to connect the cells securely. Integrate the BMS: Weld the BMS to the battery pack, ensuring all connections are precise and insulated. 4. Insulate and Secure the Pack.

How do you connect a battery in a series?

To connect batteries in a series, a jumper wire connects a battery's negative terminal to another battery's positive terminal. This leaves you with a positive

terminal at the beginning of the battery pack and a negative terminal at the end of the battery pack for your application.

How do I connect a battery charger?

The blue wire W1 must be connected to the opposite end of the battery pack as the black wire at the top of the battery pack. When batteries are connected in parallel, only use one charger. Do not connect a charger to each battery, unless you break the electrical connection between the batteries.

## Connect battery pack

---



### Powering Arduino With a Battery

Powering Arduino With a Battery: Make your Arduino projects portable by using a battery for power. From the Uno and Mega documentation pages: "The board ...

---

### Batteries and Chargers Connected in Series and Parallel

Learn how to connect batteries in series and parallel for different voltage and amp-hour capacities. Battery Tender® offers detailed instructions and diagrams for safely charging and configuring ...



### Can You Link Battery Packs? Understanding Series Vs. Parallel

Apr 11, 2025 · Can You Link Battery Packs Together? Yes, you can link battery packs together. However, it is important to consider how you connect them to avoid potential issues. ...

## Series, Parallel, and Series-Parallel Connections of Batteries

Learn battery connections: series, parallel, and series-parallel setups. Ensure safety, maximize performance, and extend battery lifecycles.



Modular design,  
unlimited combinations in parallel  
**BUILT-IN DUAL FIRE PROTECTION MODULE**



## How to Use Magsafe Battery Pack

Learn how to use MagSafe Battery Pack with our ultimate guide. From aligning and attaching to your iPhone to tips for optimized charging, we cover it all.

## How To Hook up and Install A BMS To Battery

Oct 15, 2022 · In this article, we will discuss how to attach a BMS to a lithium-ion battery. We will also go over each connection and explain what they all mean. ...



## Connecting batteries in series - BatteryGuy Knowledge ...

May 3, 2024 · Connecting batteries of different amp hour ratings in series In



theory a 6 volt 3 Ah battery and a 6 volt 5 Ah battery connected in series would give a supply of 12 volts 3 Ah (the ...

---

## Types of Battery Terminal Connectors: A ...

Apr 18, 2025 · Discover the various types of battery terminal connectors, their applications, and tips for choosing the right connector for secure and reliable ...



---

## Battery Pack & Configuration

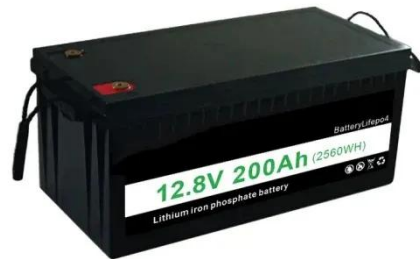
Dec 31, 2024 · Battery Pack & Configuration The battery system combines many cells and other control electronics into a full battery to power the EV.

---

## Battery Connection

The potential for burns or even fire in the event of a low-resistance connection between the positive and negative

terminals of the battery pack. To use PackProbe, first connect the Arduino ...



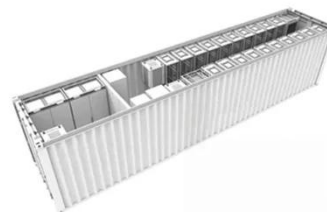
### Connecting batteries in parallel - BatteryGuy ...

May 3, 2024 · for secondary (rechargeable) batteries - the stronger battery would charge the weaker one, draining itself and wasting energy. If you connect rechargeable batteries in ...



### Connection Parts in BEV Battery Packs

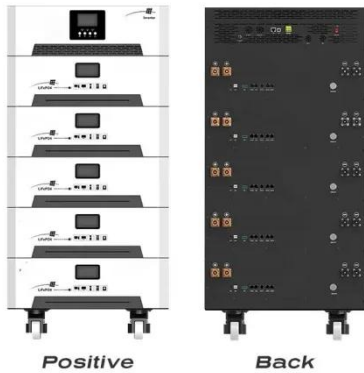
Apr 24, 2024 · These connection parts play a significant role in improving the performance of the battery packs by ensuring compact size, space efficiency, and high current capacity. This ...



### Battery Packs In Series Or Parallel: Key Differences And ...

Mar 28, 2025 · Connecting battery packs in series increases the output voltage

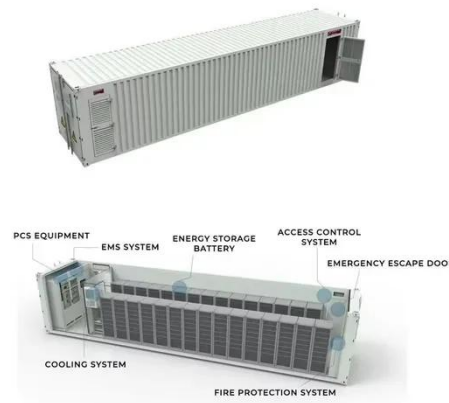




while keeping the capacity the same. In contrast, wiring them in parallel boosts the total capacity without ...

## How to Connect Battery to Motor

Apr 5, 2025 · Learn how to connect a battery to a motor with this easy-to-follow guide. Perfect for DIY enthusiasts and beginners.



## Guide: Connecting BMS to 18650 and 21700 Lithium-Ion Cells

Proper connection of a BMS to your battery cells is crucial for the safety and efficiency of your battery pack. This guide will walk you through the process of connecting a BMS to 18650 and ...

## BU-302: Series and Parallel Battery Configurations

Larger packs need custom circuits, and this applies to e-bike batteries, hybrid



cars and the Tesla Model 85 that devours over 7000 18650 cells to make up ...



---

## Connection Method and Precautions of Pack Battery Pack

Apr 10, 2024 · This article will introduce the connection mode of Pack battery Pack, including series connection and parallel connection, and matters needing attention in the connection ...



---

## How to Wire a Battery Pack from Start to Finish?

Jun 23, 2025 · Connecting batteries into a battery pack allows you to increase voltage, capacity, or both to power devices requiring more electrical power.

...



---

## ESS-240V12-9AhBPVBA03 Modular Battery Pack Quick Guide ...

Jan 18, 2019 · battery strings can connect to a maximum of four battery

packs. This document describes how to install battery packs for a 6 kVA UPS. 1. The two battery ports on a battery ...



**200kWh  
Battery Cluster**

---

## Busbar design application note

May 15, 2023 · In battery packs for electric mobility, a busbar is used to connect battery cells or modules. In automotive battery packs, busbars are used to connect battery modules together.



---

## Expand The Battery Capacity Of A Jackery With A Battery Pack

Feb 23, 2024 · Expand the battery capacity of your Jackery Explorer 1000 Plus, 2000 Plus, or 5000 Plus with a battery pack. Here's everything you need to know to get started.



---

## How To Hook up and Install A BMS To Battery

Oct 15, 2022 · This wire needs to be just as thick as the B- wire, and you can

attach it to the battery pack using the same trick described for the B- ...

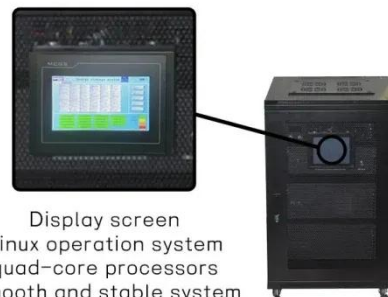


## How to Wire a BMS to Your Battery Pack

Wiring a bms to a battery pack is not a difficult thing, we explain it step by step to help you connect the bms successfully.

## Powering Up Safely: How to Wire Batteries in Series

Nov 15, 2023 · Wiring lithium-ion batteries in series is a common practice to increase overall voltage, but requires careful attention to detail and adherence to safety guidelines. Always ...



## Can I Connect to Battery Packs of Different Capacities? Risks, ...

Apr 5, 2025 · In summary, while connecting battery packs of different

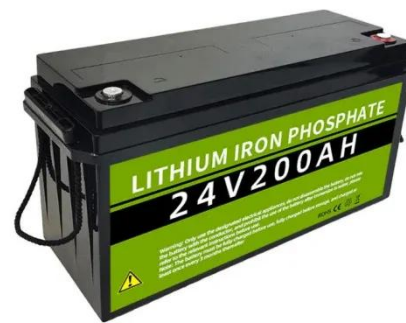
capacities is possible, it requires caution and adherence to best practices. Now, let's explore the specific steps you can ...



---

## How To Connect Batteries In Series and Parallel

Feb 9, 2025 · Connect the Cells: Use a high-voltage laser welding machine (2KW or 6KW) to weld cells in series or parallel configurations. Attach Nickel Strips: Weld nickel or aluminum strips to ...



---

## Electric Vehicle Battery Connectors

Aug 19, 2025 · Electric vehicle battery management systems (BMS), battery packs and cell-to-battery applications require a suite of rugged, reliable ...



---

## How to Assemble a Battery Pack with a BMS ...

Oct 7, 2024 · Learn how to safely assemble a battery pack with a BMS

module. Our step-by-step guide covers materials needed, safety precautions, detailed ...



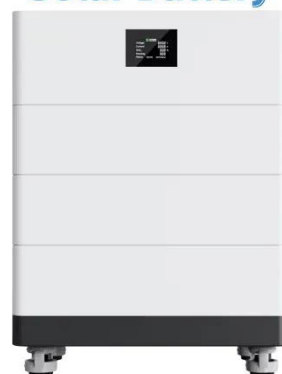
## Making a Li-Ion battery pack

Jun 6, 2020 · Your pack is now finished: Since we used Samsung INR21700-50E cells, this battery pack is a 2S pack with 5000 mAh. Even though these are Li ...

## How to Connect a BMS to Your Battery Pack

Apr 30, 2025 · Learn how to connect a BMS to your battery pack with our step-by-step guide. Ensure safety, efficiency, and longevity for your lithium-ion batteries.

## High Voltage Solar Battery



## How to Connect Two Batteries in Parallel?

Mar 19, 2025 · Learn how to connect two batteries in parallel, increase capacity,

and avoid common mistakes. Perfect for DIY enthusiasts and tech lovers. Get ...



---

## Parallel then Series or Series then Parallel

Sep 29, 2023 · How should you connect battery cells together: Parallel then Series or Series then Parallel? What are the benefits and what are the issues ...



---

## Contact Us

For catalog requests, pricing, or partnerships, please visit:  
<https://wf-budownictwo.pl>